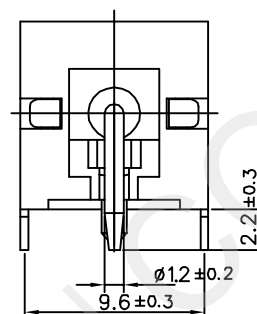
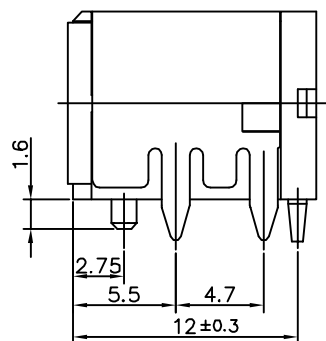
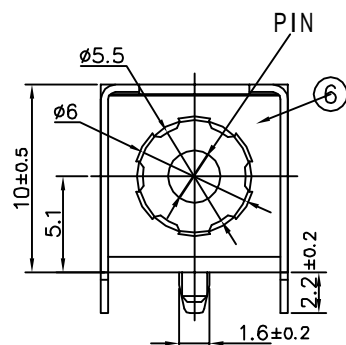


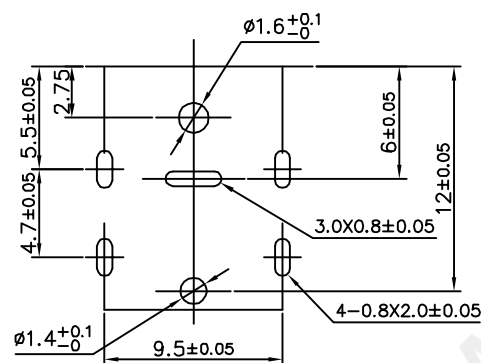
SCHEMATIC

PIN	2.0	2.5
-----	-----	-----

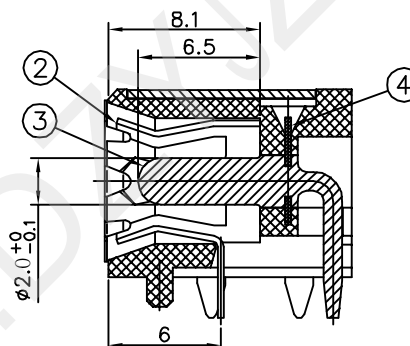


## 主要技术性能

1. 额定电负荷: 24V•10A;
2. 接 触 电 阻:  $\leq 0.03 \Omega$ ;
3. 绝 缘 电 阻:  $\geq 100 M\Omega$ ;  
 $n$ ;
4. 耐 压: AC500V (50Hz)/mi
5. 插 拔 力: 3~25N;
6. 寿 命: 5,000次。



PCB MOUNTING HOLES

BOTTOM VIEW  
(TOLERANCE:  $\pm 0.05$ )

深圳市华宇创精密电子有限公司

TOLERANCE: X.X $\pm 0.30$ X.XX $\pm 0.25$ X.XXX $\pm 0.15$ X' $\pm 2'$ X.X' $\pm 0.5'$	DRAWN BY : 陈一鸣	DATE : 2014-02-23	PART NAME: DC-007B
	CHECKED BY: 马跃	DATE : 2014-02-23	PART NO. HYC-DC007B-XXX
	APPROVED BY: 邱敏	DATE : 2014-02-23	MOLD NO.
UNIT: mm [inch] SCALE:1:1 SIZE: A4		DRAW NO: HYC-DC17111715	SHEET NO. 1 OF 1